

Technical data sheet

Relay 740

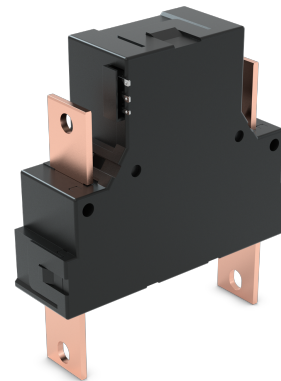
Description

For new developments we recommend to use relay type 743. Please contact us for details.

Polarized latching relay for 200 A

Using the H-armature principle the polarised latching relays are noted for their high resistance to shocks and vibrations. They are always in a defined switching-position and therefore there is no loss of information in case of power failure. The advantage of polarised latching relays is the pulse driven operation of some milliseconds, coil heating can be neglected.

The relays are designed and manufactured in accordance to international Standards of IEC 61810 part 1 as well as they meet overload and short circuit requirements acc. to ANSI C12.



Technical data

Coil data	Rated voltage	12 – 48 VDC
	Rated power	24.0 W
	Operating power to set	15.0 W
	Pulse to set	30 ms
	Action time	< 30 ms
Contact data	Max. contact arrangement	2 NO
	Contact material	AgSnO ₂
	Max. switching power	50000 VA
	Max. switching voltage	440 VAC
	Rated switching current	200 A
	Mechanical life	10 ⁶
Insulation	Creepage and clearance distance coil - contact	9.5 mm
	Test voltage coil - contact	4000 V eff.
	Test voltage contact- contact	4000 V eff.
	Test voltage open contact	1000 V eff.
	Dielectric strength coil - contact	12 kV / 1,2 / 50 µs

Technical data

General data	Ambient temperature	-40 ... +85 °C
	Weight	320 g
	Conform to	VDE, UL (E151314-x-3), CSA, SEV, SEMKO

Standard windings

Standard winding No.	Nominal coil voltage (VDC)	Operating voltage of the coil U1 - U2 (VDC)	Coil resistance (Ohm)	Tolerance (± %)
6R0	12	9,6 - 15,6	2 x 6	10
024	24	19,2 - 31,2	2 x 24	10
095	48	38,4 - 62,4	2 x 95	15

Contact position		
Terminal-grid	B 3(-)/4(+)	2(-)/4(+)

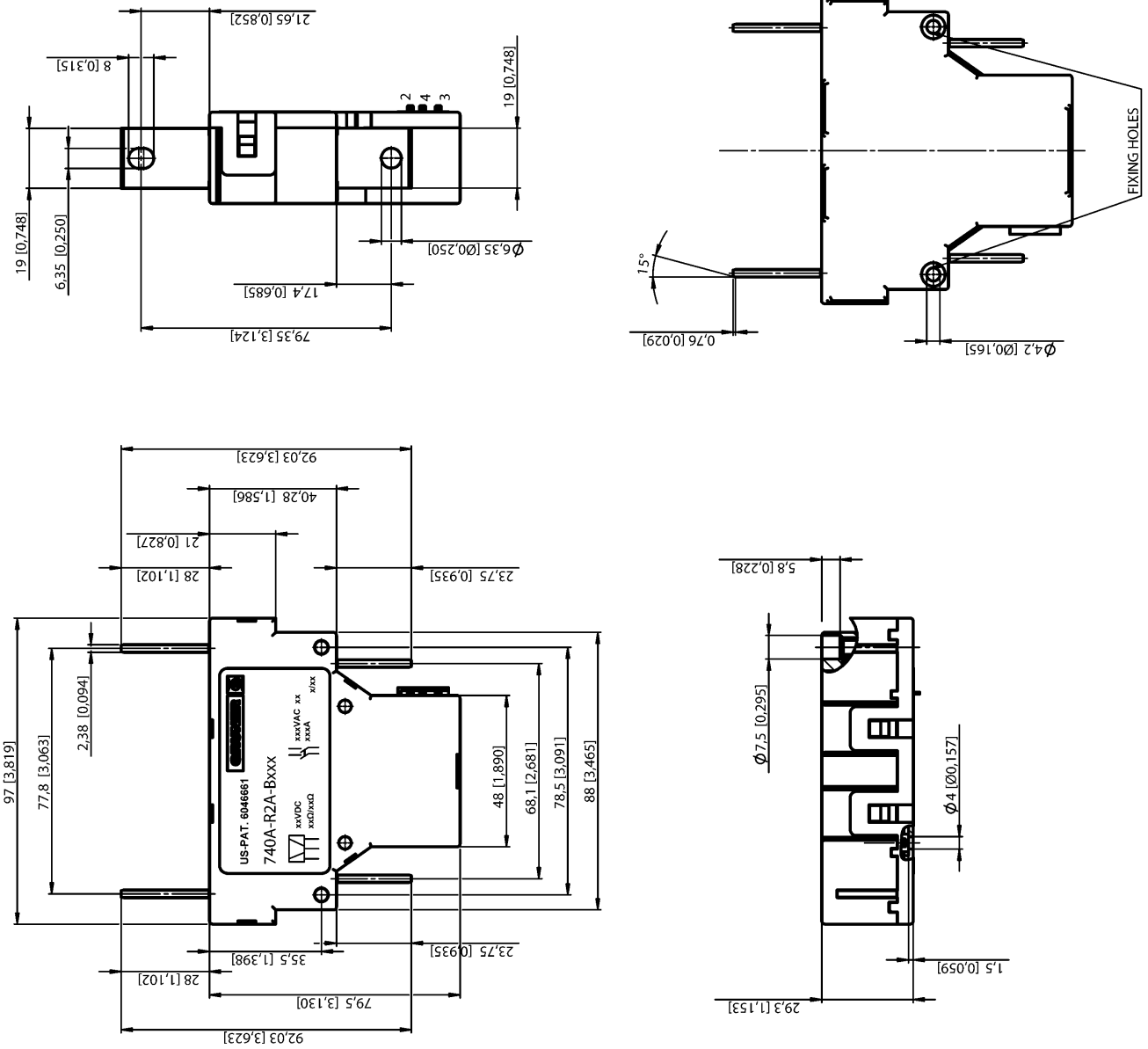
The relay can also be used with a single winding (lower operating power to set) if the middle pin of coil is not used. Furthermore, the magnet's polarization can also be adjusted to meet the customer's specific drive circuit requirements.

Identification

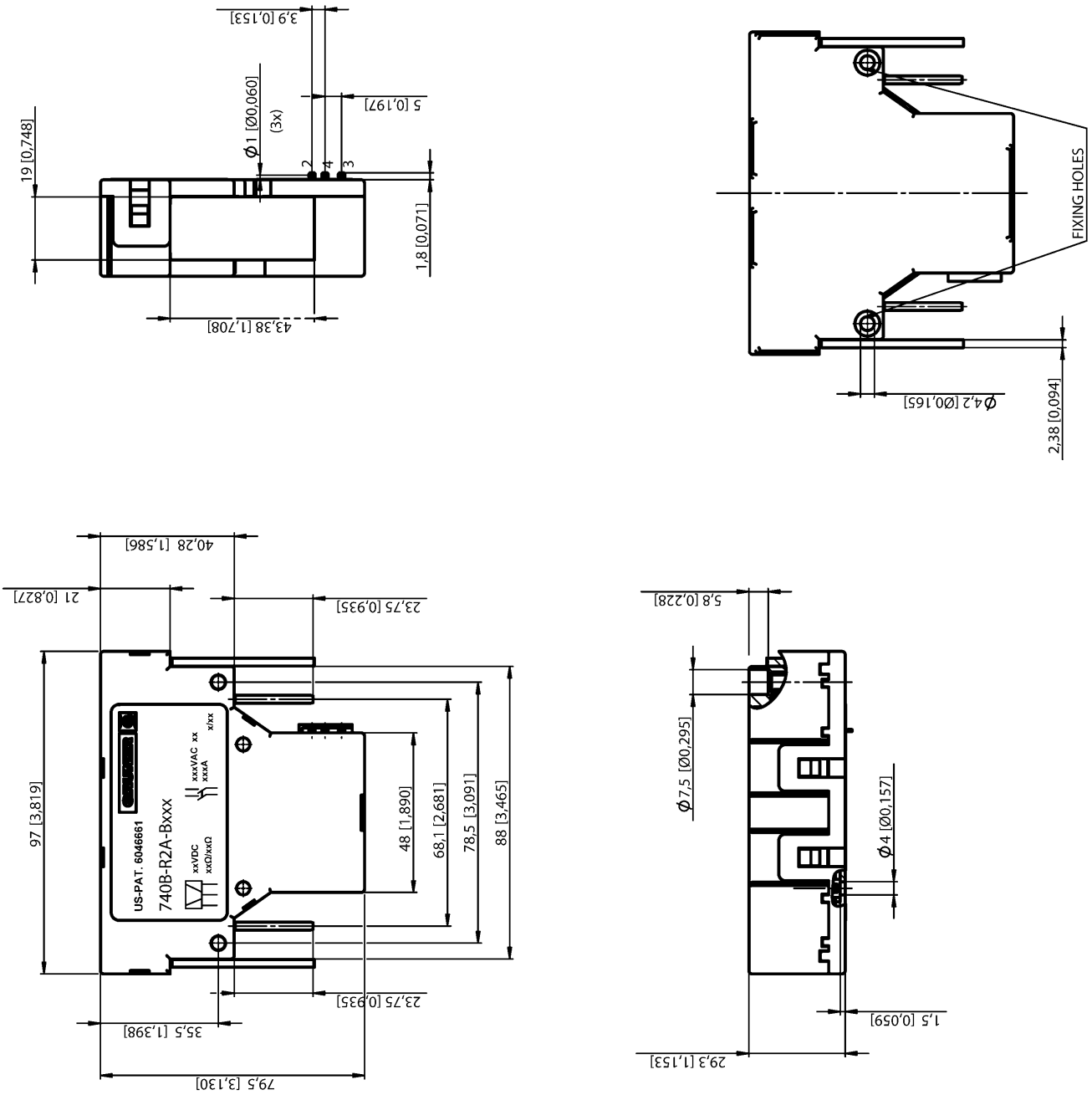
Identification code		740	A	A	-	R	2A	-	B	6R0	
Type	740	[Line to 740]									
Version	A / B = see dim. draw.	[Line to A]									
Auxiliary switch	A = 0.05 A, 30 VDC / 1 CO	[Line to A]									
Contact material	R = AgSnO ₂	[Line to R]									
Contact arrangement	2A = 2 normally open	[Line to 2A]									
Terminal-grid	B	[Line to B]									
Winding No.	see coil table	[Line to 6R0]									

The power terminals can be modified according to customer specification.

Technical drawing



740 A



740 B