

Technical data sheet

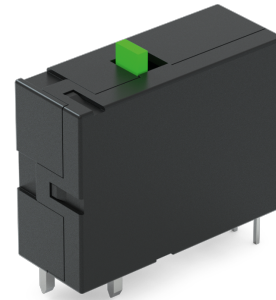
Relay 704 L

Description

Relay, polarized latching for capacitive load up to 200 µF and lamp load up to 4,800 W

Using the H-armature principle the polarised latching relays are noted for their high resistance to shocks and vibrations. They are always in a defined switching-position and therefore there is no loss of information in case of power failure. The advantage of polarised latching relays is the pulse driven operation of some milliseconds, coil heating can be neglected. Relay can also be set by manual operation.

The relays are designed and manufactured in accordance to international Standards of IEC 61810 part 1.



Technical data

Coil data	Rated voltage	6 – 48 VDC
	Rated power	3.0 W
	Operating power to set	2.0 W
	Pulse to set	20 ms
	Action time	< 15 ms
Contact data	Max. contact arrangement	1 NO
	Contact material	AgSnO ₂
	Max. switching power	10.000 VA / 15.000 VA
	Max. switching voltage	440 VAC
	Max. switching current	20 A
	Mechanical life	10 ⁶
Insulation	Creepage and clearance distance coil - contact	8.0 mm
	Test voltage coil - contact	4000 V eff.
	Test voltage contact- contact	V eff.
	Test voltage open contact	1000 V eff.
	Dielectric strength coil - contact	12 kV / 1,2 / 50 µs

Technical data



General data	Ambient temperature	-40 ... +70 °C
	Weight	36 g
	Conform to	VDE, UL, CSA, SEV, SEMKO

Load cycles

Load	30,000 cycles
Incandescent lamp	4,800 W
Fluorescent lamp, not compensated	5,000 W
Fluorescent lamp, parallel compensated	2,500 W / 200 µF
Fluorescent lamp, duo-combination	2 x 5,000 W
Halogen lamp (230 VAC)	5,000 W
Low voltage halogen lamp with transformer	2,000 VA
Mercury arc/sodium discharge lamp not compensated	5,000 W
Mercury arc/sodium discharge lamp parallel compensated	5,000 W / 200 µF
Dulux lamp, not compensated	4,000 W
Dulux lamp, parallel compensated	3,000 W / 200 µF

Standard windings

Standard winding No.	Nominal coil voltage (VDC)	Operating voltage of the coil (VDC)	Coil resistance (Ohm)	Tolerance (± %)
011	6	4,8 - 7,8	2 x 11	10
050	12	9,6 - 15,6	2 x 50	10
180	24	19,2 - 31,2	2 x 180	10
800	48	38,4 - 62,4	2 x 800	15

Contact position		
Position	(a)	(b)
Terminal-grid	H 1(-)/5(+) B 3(-)/4(+)	2(-)/5(+) 2(-)/4(+)

The relay can also be used with a single winding (lower operating power to set) if the middle pin of coil is not used.

Identification

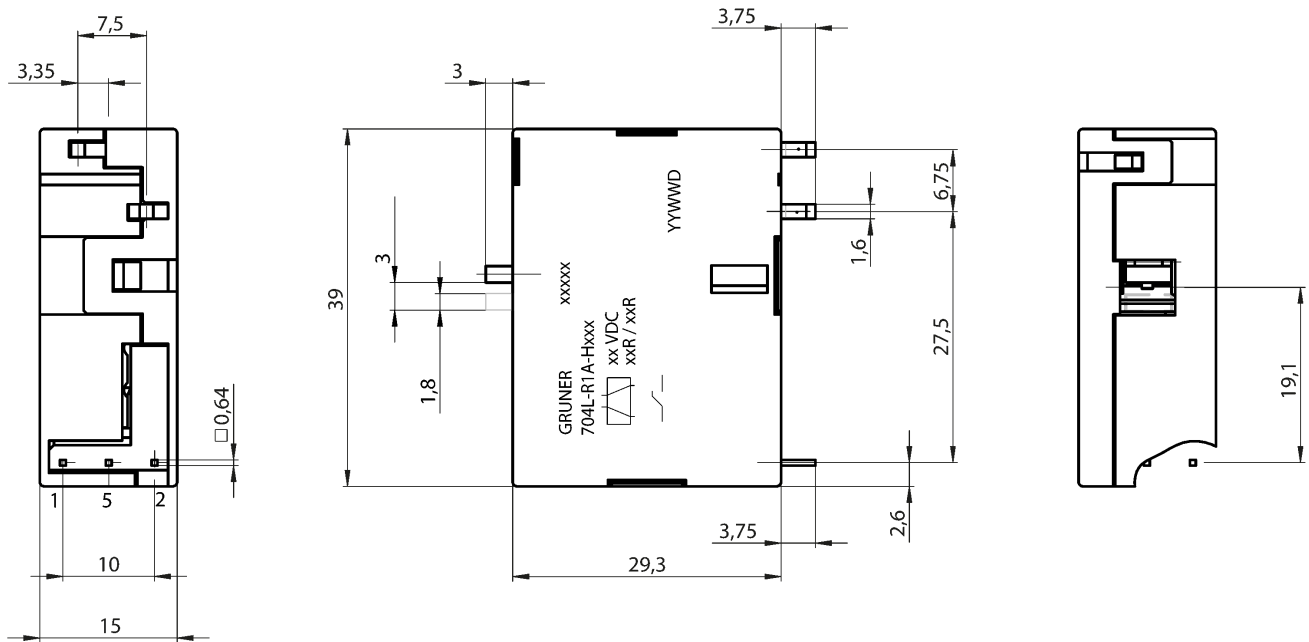
Identification code		704	L	-	R	1A	-	H	050
Type	704								
Version	L = lamp load								
Contact material	R = AgSnO ₂								
Contact arrangement	1A = 1 normally open								
Terminal-grid	B / H								
Winding No.	see coil table								

Advice for soldering:

The relay is dust-protected. Take care to avoid that flux medium and lead-tin resp. their evaporations enter into the relay, i.e. the printed circuit board must not be flooded.

Extended storage could impact solderability due to increased oxidation on the terminals.

Technical drawing



704 L